

Siapupy

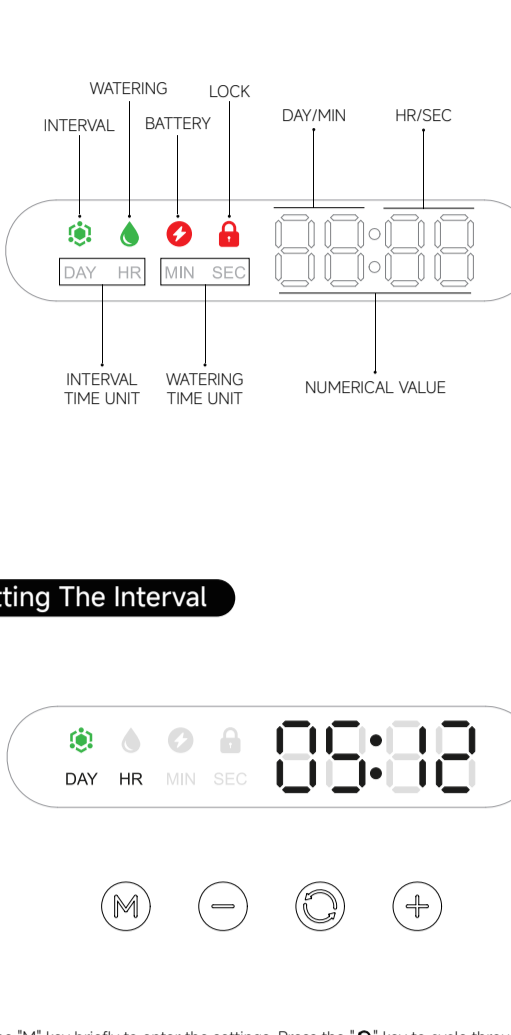
Plant Timer Waterer W1

User Guide

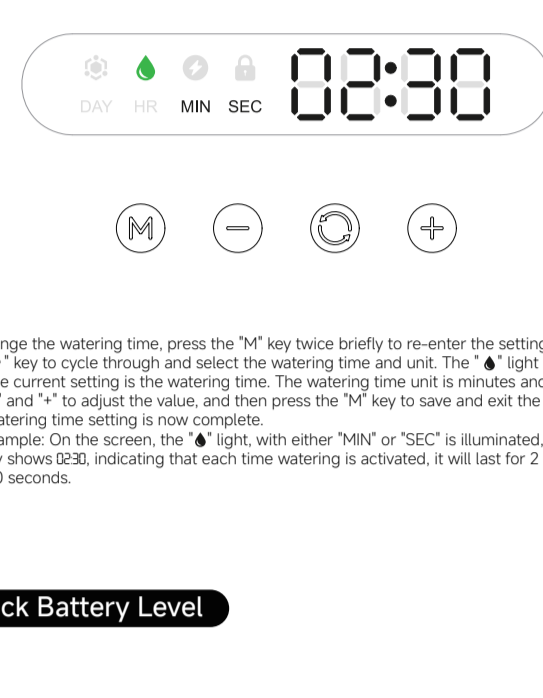
Version 3.2.

Thank you for purchasing and using this product. In order to provide you with a better experience, please read the instructions carefully before use and keep them properly for your reference.

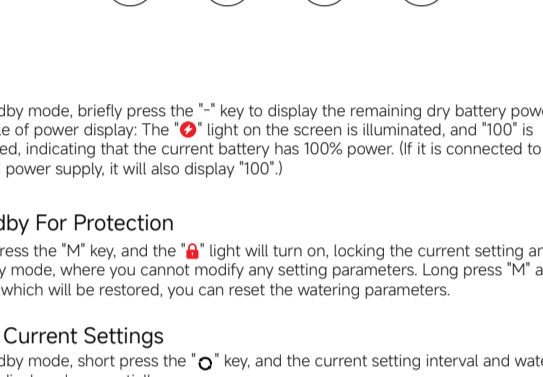
Function



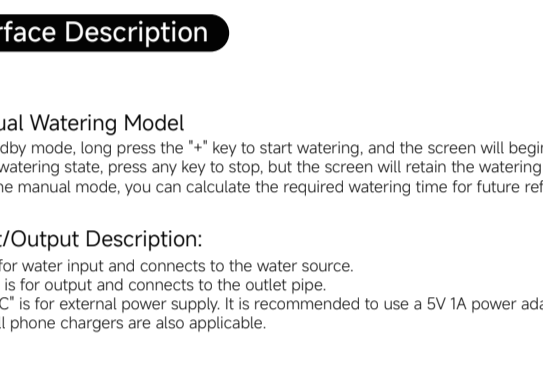
LED Display



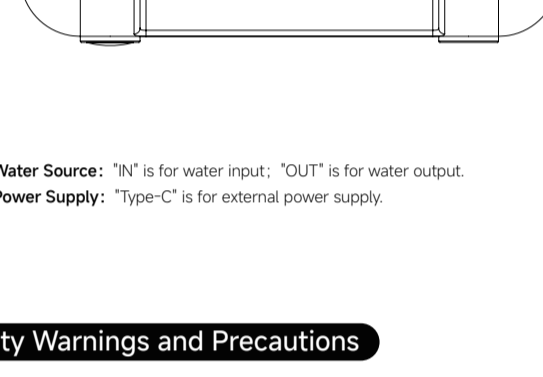
Setting The Interval



Setting The Watering Time



Check Battery Level



In standby mode, briefly press the "-" key to display the remaining dry battery power. Example of power display: The "B" light on the screen is illuminated, and "100" is displayed, indicating that the current battery has 100% power. (If it is connected to a Type-C power supply, it will also display "100".)

Standby For Protection

Long press the "M" key, and the "A" light will turn on, locking the current setting and entering standby mode, where you cannot modify any setting parameters. Long press "M" again to unlock which will be restored, you can reset the watering parameters.

View Current Settings

In standby mode, short press the "C" key, and the current setting interval and watering time will be displayed sequentially.

View Remaining Interval

In standby mode, short press "+" key to display the remaining time of parameters you have set, including days, hours, minutes and seconds.

Power Switch

In the power-on state, long press the "C" key, and the "OFF" light will flash three times to shutdown. In the powered-off state, long press the "C" key to power on.

Interface Description

Manual Watering Model

In standby mode, long press the "+" key to start watering, and the screen will begin timing. In the watering state, press any key to stop, but the screen will retain the watering time. With the manual mode, you can calculate the required watering time for future reference.

Input/Output Description:

"IN" is for water input and connects to the water source.

"OUT" is for output and connects to the outlet pipe.

"Type-C" is for external power supply. It is recommended to use a 5V 1A power adapter, but cell phone chargers are also applicable.



Water Source: "IN" is for water input; "OUT" is for water output.

Power Supply: "Type-C" is for external power supply.

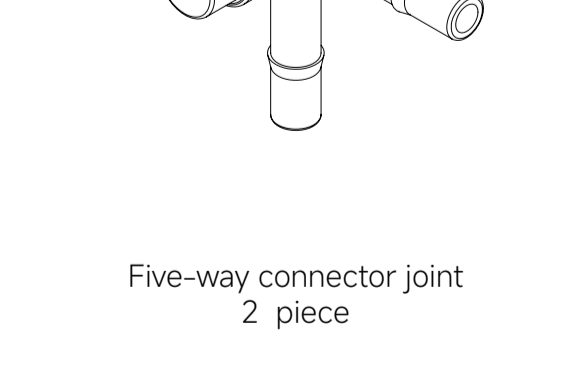
Safety Warnings and Precautions

- When it is not in use for a long time, please remove the battery and disconnect the USB power supply.
- When using an external power adapter, please use one with an output of DC 5V 1A and a Type-C interface.
- This product does not include a power adapter.
- Please do not disassemble this product without authorization.
- If the product is damaged, please stop using it immediately.
- Children are not allowed to use this product unsupervised.
- This product is not waterproof.

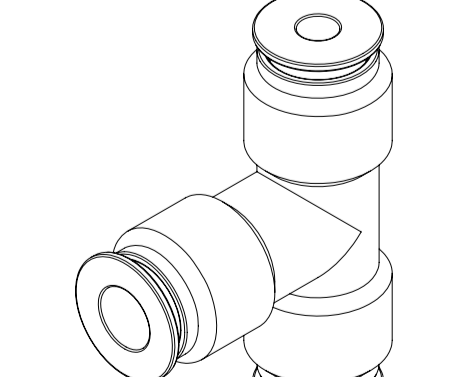
Specification

Product Name:	Smart Timed Waterer
Model:	W1
Product Size:	5.91" x 3.54" x 2.28" (L x W x H)
Material:	ABS, Acrylic, Electronic components, Stainless steel
Type-C Input:	DC 5V
Water Flow:	Maximum 900ml / min
Battery:	3 AA Dry batteries
Battery Operating Time:	Maximum 300 minutes of watering (depending on battery quality)
Place of Origin:	Made in China

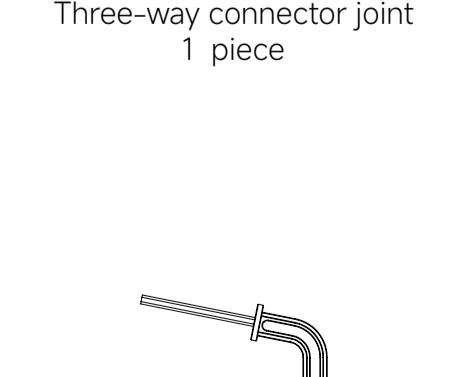
Product List



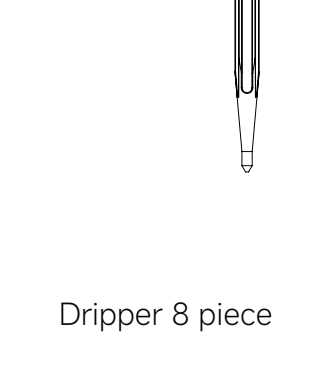
Mainframe: 1 unit



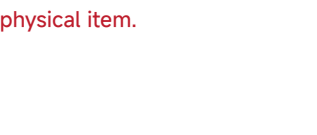
Branch water pipe: 9.8ft



Main water pipe: 6.56ft



User Guide: 1 copy



Two-way connector joint
2 piece

Five-way connector joint
2 piece

Three-way connector joint
1 piece

Dripper 8 piece

A friendly tip: Our company may upgrade and update the product.

If what's described here doesn't match your actual product, always go by the physical item.